



SPEC[®] CFP2006 Result

Copyright 2006-2014 Standard Performance Evaluation Corporation

Dell Inc.

SPECfp[®]2006 = 30.3

PowerEdge R710 (Intel Xeon E5603, 1.60 GHz)

SPECfp_base2006 = 29.3

CPU2006 license: 55

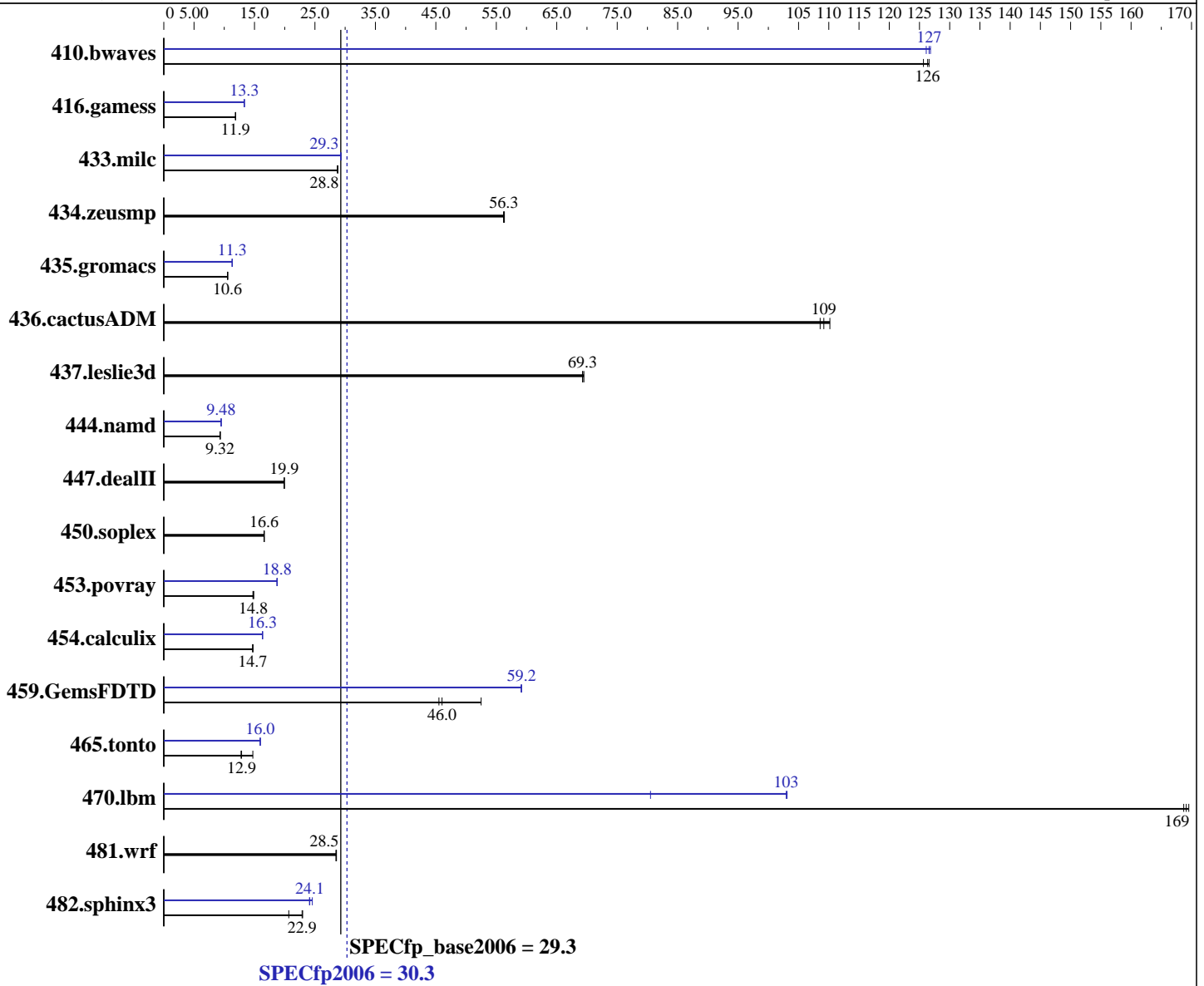
Test date: Feb-2011

Test sponsor: Dell Inc.

Hardware Availability: Feb-2011

Tested by: Dell Inc.

Software Availability: Apr-2011



Hardware

CPU Name: Intel Xeon E5603
 CPU Characteristics:
 CPU MHz: 1600
 FPU: Integrated
 CPU(s) enabled: 8 cores, 2 chips, 4 cores/chip
 CPU(s) orderable: 1,2 chip
 Primary Cache: 32 KB I + 32 KB D on chip per core
 Secondary Cache: 256 KB I+D on chip per core

Continued on next page

Software

Operating System: SUSE Linux Enterprise Server 11 SP1 (x86_64),
 Kernel 2.6.32.12-0.7-default
 Compiler: Intel C++ and Fortran Intel 64 Compiler XE
 for applications running on Intel 64
 Version 12.0 Update 3
 Auto Parallel: Yes
 File System: ext3
 System State: Run level 3 (multi-user)
 Base Pointers: 64-bit

Continued on next page



SPEC CFP2006 Result

Copyright 2006-2014 Standard Performance Evaluation Corporation

Dell Inc.

SPECfp2006 = 30.3

PowerEdge R710 (Intel Xeon E5603, 1.60 GHz)

SPECfp_base2006 = 29.3

CPU2006 license: 55

Test date: Feb-2011

Test sponsor: Dell Inc.

Hardware Availability: Feb-2011

Tested by: Dell Inc.

Software Availability: Apr-2011

L3 Cache: 4 MB I+D on chip per chip
 Other Cache: None
 Memory: 48 GB (12 x 4 GB 2Rx4 PC3-10600R-9, ECC, running at 1066 MHz)
 Disk Subsystem: 146 GB 10000 RPM SAS
 Other Hardware: None

Peak Pointers: 32/64-bit
 Other Software: None

Results Table

Benchmark	Base						Peak					
	Seconds	Ratio	Seconds	Ratio	Seconds	Ratio	Seconds	Ratio	Seconds	Ratio	Seconds	Ratio
410.bwaves	108	126	108	126	107	127	107	127	108	126	107	127
416.gamess	1650	11.9	1651	11.9	1649	11.9	1469	13.3	1472	13.3	1469	13.3
433.milc	320	28.7	319	28.8	319	28.8	314	29.3	314	29.2	313	29.3
434.zeusmp	162	56.2	162	56.3	162	56.3	162	56.2	162	56.3	162	56.3
435.gromacs	677	10.5	675	10.6	676	10.6	631	11.3	632	11.3	631	11.3
436.cactusADM	110	109	109	109	108	110	110	109	109	109	108	110
437.leslie3d	136	69.3	135	69.5	136	69.3	136	69.3	135	69.5	136	69.3
444.namd	860	9.32	860	9.32	859	9.33	844	9.50	846	9.48	846	9.48
447.dealII	574	19.9	574	19.9	574	19.9	574	19.9	574	19.9	574	19.9
450.soplex	503	16.6	502	16.6	502	16.6	503	16.6	502	16.6	502	16.6
453.povray	359	14.8	358	14.9	361	14.7	283	18.8	283	18.8	285	18.7
454.calculix	561	14.7	561	14.7	559	14.8	505	16.3	505	16.3	505	16.3
459.GemsFDTD	202	52.5	231	46.0	233	45.5	179	59.2	179	59.2	179	59.1
465.tonto	668	14.7	765	12.9	770	12.8	617	16.0	616	16.0	618	15.9
470.lbm	81.2	169	81.0	170	81.4	169	171	80.5	133	103	133	103
481.wrf	392	28.5	391	28.6	392	28.5	392	28.5	391	28.6	392	28.5
482.sphinx3	943	20.7	848	23.0	852	22.9	793	24.6	809	24.1	807	24.1

Results appear in the order in which they were run. Bold underlined text indicates a median measurement.

Operating System Notes

```
'mount -t hugetlbfs nodev /mnt/hugepages' was used to enable large pages
echo 900 > /proc/sys/vm/nr_hugepages
export HUGETLB_MORECORE=yes
export LD_PRELOAD=/usr/lib64/libhugetlbfs.so
```

Platform Notes

BIOS Settings:
 Power Management: Maximum Performance (Default = Active Power Controller)
 Data Reuse: Disabled (Default = Enabled)



SPEC CFP2006 Result

Copyright 2006-2014 Standard Performance Evaluation Corporation

Dell Inc.

SPECfp2006 = 30.3

PowerEdge R710 (Intel Xeon E5603, 1.60 GHz)

SPECfp_base2006 = 29.3

CPU2006 license: 55

Test date: Feb-2011

Test sponsor: Dell Inc.

Hardware Availability: Feb-2011

Tested by: Dell Inc.

Software Availability: Apr-2011

General Notes

OMP_NUM_THREADS set to number of cores
The Dell PowerEdge R710 and the Bull NovaScale R460 F2 models are electronically equivalent. The results have been measured on a Dell PowerEdge R710 model. Binaries were compiled on RHEL5.5

Base Compiler Invocation

C benchmarks:

icc -m64

C++ benchmarks:

icpc -m64

Fortran benchmarks:

ifort -m64

Benchmarks using both Fortran and C:

icc -m64 ifort -m64

Base Portability Flags

410.bwaves: -DSPEC_CPU_LP64
416.gamess: -DSPEC_CPU_LP64
433.milc: -DSPEC_CPU_LP64
434.zeusmp: -DSPEC_CPU_LP64
435.gromacs: -DSPEC_CPU_LP64 -nofor_main
436.cactusADM: -DSPEC_CPU_LP64 -nofor_main
437.leslie3d: -DSPEC_CPU_LP64
444.namd: -DSPEC_CPU_LP64
447.deallI: -DSPEC_CPU_LP64
450.soplex: -DSPEC_CPU_LP64
453.povray: -DSPEC_CPU_LP64
454.calculix: -DSPEC_CPU_LP64 -nofor_main
459.GemsFDTD: -DSPEC_CPU_LP64
465.tonto: -DSPEC_CPU_LP64
470.lbm: -DSPEC_CPU_LP64
481.wrf: -DSPEC_CPU_LP64 -DSPEC_CPU_CASE_FLAG -DSPEC_CPU_LINUX
482.sphinx3: -DSPEC_CPU_LP64

Base Optimization Flags

C benchmarks:

-xSSE4.2 -ipo -O3 -no-prec-div -static -parallel -opt-prefetch
-ansi-alias

Continued on next page



SPEC CFP2006 Result

Copyright 2006-2014 Standard Performance Evaluation Corporation

Dell Inc.

SPECfp2006 = 30.3

PowerEdge R710 (Intel Xeon E5603, 1.60 GHz)

SPECfp_base2006 = 29.3

CPU2006 license: 55

Test date: Feb-2011

Test sponsor: Dell Inc.

Hardware Availability: Feb-2011

Tested by: Dell Inc.

Software Availability: Apr-2011

Base Optimization Flags (Continued)

C++ benchmarks:

-xSSE4.2 -ipo -O3 -no-prec-div -static -opt-prefetch -ansi-alias

Fortran benchmarks:

-xSSE4.2 -ipo -O3 -no-prec-div -static -parallel -opt-prefetch

Benchmarks using both Fortran and C:

-xSSE4.2 -ipo -O3 -no-prec-div -static -parallel -opt-prefetch
-ansi-alias

Peak Compiler Invocation

C benchmarks:

icc -m64

C++ benchmarks:

icpc -m64

Fortran benchmarks:

ifort -m64

Benchmarks using both Fortran and C:

icc -m64 ifort -m64

Peak Portability Flags

Same as Base Portability Flags

Peak Optimization Flags

C benchmarks:

433.milc: -xSSE4.2(pass 2) -prof-gen(pass 1) -ipo(pass 2) -O3(pass 2)
-no-prec-div(pass 2) -prof-use(pass 2) -static -auto-ilp32
-ansi-alias

470.lbm: -xSSE4.2(pass 2) -prof-gen(pass 1) -ipo(pass 2) -O3(pass 2)
-no-prec-div(pass 2) -prof-use(pass 2) -parallel
-ansi-alias -static -auto-ilp32

482.sphinx3: -xSSE4.2 -ipo -O3 -no-prec-div -unroll2 -ansi-alias
-parallel

Continued on next page



SPEC CFP2006 Result

Copyright 2006-2014 Standard Performance Evaluation Corporation

Dell Inc.

SPECfp2006 = 30.3

PowerEdge R710 (Intel Xeon E5603, 1.60 GHz)

SPECfp_base2006 = 29.3

CPU2006 license: 55

Test date: Feb-2011

Test sponsor: Dell Inc.

Hardware Availability: Feb-2011

Tested by: Dell Inc.

Software Availability: Apr-2011

Peak Optimization Flags (Continued)

C++ benchmarks:

444.namd: -xSSE4.2(pass 2) -prof-gen(pass 1) -ipo(pass 2) -O3(pass 2)
-no-prec-div(pass 2) -prof-use(pass 2) -fno-alias
-auto-ilp32

447.dealIII: basepeak = yes

450.soplex: basepeak = yes

453.povray: -xSSE4.2(pass 2) -prof-gen(pass 1) -ipo(pass 2) -O3(pass 2)
-no-prec-div(pass 2) -prof-use(pass 2) -unroll4 -ansi-alias
-B /usr/share/libhugetlbfs/ -Wl,-melf_x86_64 -Wl,-hugetlbfs-link=BDT

Fortran benchmarks:

410.bwaves: -xSSE4.2 -ipo -O3 -no-prec-div -opt-prefetch -parallel
-static

416.gamess: -xSSE4.2(pass 2) -prof-gen(pass 1) -ipo(pass 2) -O3(pass 2)
-no-prec-div(pass 2) -prof-use(pass 2) -unroll2
-inline-level=0 -scalar-rep- -static

434.zeusmp: basepeak = yes

437.leslie3d: basepeak = yes

459.GemsFDTD: -xSSE4.2(pass 2) -prof-gen(pass 1) -ipo(pass 2) -O3(pass 2)
-no-prec-div(pass 2) -prof-use(pass 2) -unroll2
-inline-level=0 -opt-prefetch -parallel
-B /usr/share/libhugetlbfs/ -Wl,-melf_x86_64 -Wl,-hugetlbfs-link=BDT

465.tonto: -xSSE4.2(pass 2) -prof-gen(pass 1) -ipo(pass 2) -O3(pass 2)
-no-prec-div(pass 2) -prof-use(pass 2) -inline-calloc
-opt-malloc-options=3 -auto -unroll4
-B /usr/share/libhugetlbfs/ -Wl,-melf_x86_64 -Wl,-hugetlbfs-link=BDT

Benchmarks using both Fortran and C:

435.gromacs: -xSSE4.2(pass 2) -prof-gen(pass 1) -ipo(pass 2) -O3(pass 2)
-no-prec-div(pass 2) -prof-use(pass 2) -static -auto-ilp32
-ansi-alias

436.cactusADM: basepeak = yes

454.calculix: -xSSE4.2 -ipo -O3 -no-prec-div -auto-ilp32 -ansi-alias

481.wrf: basepeak = yes



SPEC CFP2006 Result

Copyright 2006-2014 Standard Performance Evaluation Corporation

Dell Inc.

SPECfp2006 = 30.3

PowerEdge R710 (Intel Xeon E5603, 1.60 GHz)

SPECfp_base2006 = 29.3

CPU2006 license: 55

Test date: Feb-2011

Test sponsor: Dell Inc.

Hardware Availability: Feb-2011

Tested by: Dell Inc.

Software Availability: Apr-2011

The flags files that were used to format this result can be browsed at

<http://www.spec.org/cpu2006/flags/Intel-ic12.0-linux64-revB.html>

<http://www.spec.org/cpu2006/flags/Intel-Linux64-Platform.20110308.html>

You can also download the XML flags sources by saving the following links:

<http://www.spec.org/cpu2006/flags/Intel-ic12.0-linux64-revB.xml>

<http://www.spec.org/cpu2006/flags/Intel-Linux64-Platform.20110308.xml>

SPEC and SPECfp are registered trademarks of the Standard Performance Evaluation Corporation. All other brand and product names appearing in this result are trademarks or registered trademarks of their respective holders.

For questions about this result, please contact the tester.
For other inquiries, please contact webmaster@spec.org.

Tested with SPEC CPU2006 v1.1.
Report generated on Wed Jul 23 15:47:01 2014 by SPEC CPU2006 PS/PDF formatter v6932.
Originally published on 29 March 2011.