



SPEC® CINT2006 Result

Copyright 2006-2015 Standard Performance Evaluation Corporation

Huawei

SPECint®2006 = 56.7

Huawei CH226 V3 (Intel Xeon E5-2658A v3)

SPECint_base2006 = 54.4

CPU2006 license: 3175

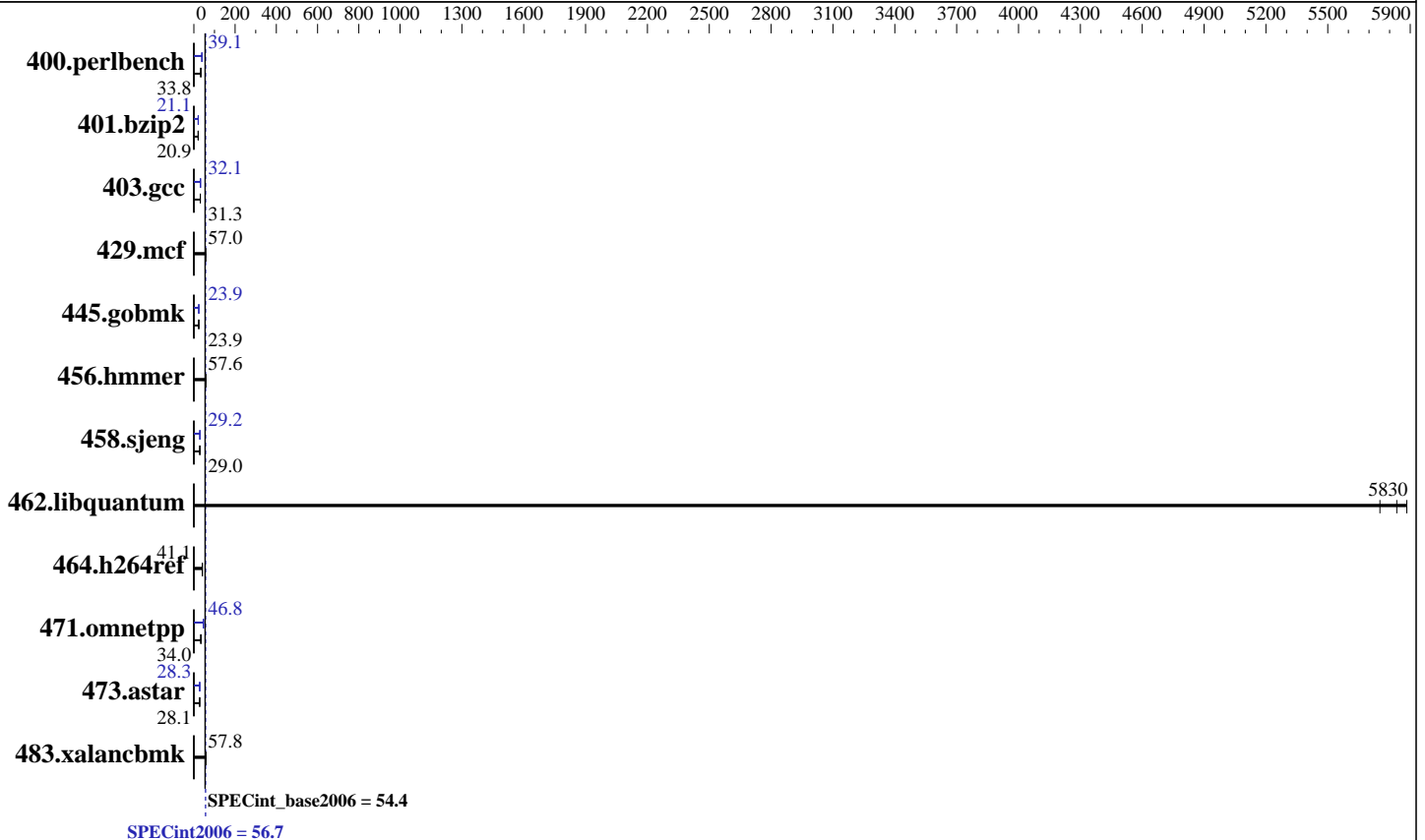
Test sponsor: Huawei

Tested by: Huawei

Test date: Sep-2015

Hardware Availability: Feb-2015

Software Availability: Sep-2014



Hardware

CPU Name: Intel Xeon E5-2658A v3
 CPU Characteristics: Intel Turbo Boost Technology up to 2.90 GHz
 CPU MHz: 2200
 FPU: Integrated
 CPU(s) enabled: 24 cores, 2 chips, 12 cores/chip
 CPU(s) orderable: 1,2 chip
 Primary Cache: 32 KB I + 32 KB D on chip per core
 Secondary Cache: 256 KB I+D on chip per core
 L3 Cache: 30 MB I+D on chip per chip
 Other Cache: None
 Memory: 256 GB (16 x 16 GB 2Rx4 PC4-2133P-R)
 Disk Subsystem: 1 x 500 GB SATA, 7200 RPM
 Other Hardware: None

Software

Operating System: Red Hat Enterprise Linux Server release 7.0 (Maipo)
 3.10.0-123.el7.x86_64
 Compiler: C/C++: Version 15.0.0.090 of Intel C++ Studio XE for Linux
 Auto Parallel: Yes
 File System: ext4
 System State: Run level 3 (multi-user)
 Base Pointers: 32/64-bit
 Peak Pointers: 32/64-bit
 Other Software: Microquill SmartHeap V10.0



SPEC CINT2006 Result

Copyright 2006-2015 Standard Performance Evaluation Corporation

Huawei

SPECint2006 = **56.7**

Huawei CH226 V3 (Intel Xeon E5-2658A v3)

SPECint_base2006 = **54.4**

CPU2006 license: 3175
Test sponsor: Huawei
Tested by: Huawei

Test date: Sep-2015
Hardware Availability: Feb-2015
Software Availability: Sep-2014

Results Table

Benchmark	Base						Peak					
	Seconds	Ratio	Seconds	Ratio	Seconds	Ratio	Seconds	Ratio	Seconds	Ratio	Seconds	Ratio
400.perlbench	293	33.4	<u>289</u>	<u>33.8</u>	287	34.1	250	39.1	<u>250</u>	<u>39.1</u>	250	39.1
401.bzip2	<u>461</u>	<u>20.9</u>	462	20.9	459	21.0	457	21.1	<u>457</u>	<u>21.1</u>	457	21.1
403.gcc	<u>257</u>	<u>31.3</u>	257	31.4	258	31.3	251	32.1	252	32.0	<u>251</u>	<u>32.1</u>
429.mcf	161	56.5	<u>160</u>	<u>57.0</u>	159	57.4	161	56.5	<u>160</u>	<u>57.0</u>	159	57.4
445.gobmk	440	23.9	438	24.0	<u>440</u>	<u>23.9</u>	438	24.0	<u>438</u>	<u>23.9</u>	439	23.9
456.hammer	<u>162</u>	<u>57.6</u>	162	57.5	162	57.6	<u>162</u>	<u>57.6</u>	162	57.5	162	57.6
458.sjeng	<u>417</u>	<u>29.0</u>	417	29.0	417	29.0	414	29.2	416	29.1	<u>415</u>	<u>29.2</u>
462.libquantum	3.52	5880	<u>3.55</u>	<u>5830</u>	3.60	5750	3.52	5880	<u>3.55</u>	<u>5830</u>	3.60	5750
464.h264ref	542	40.8	537	41.2	<u>538</u>	<u>41.1</u>	542	40.8	537	41.2	<u>538</u>	<u>41.1</u>
471.omnetpp	<u>184</u>	<u>34.0</u>	180	34.7	187	33.5	137	45.6	133	46.8	<u>134</u>	<u>46.8</u>
473.astar	<u>249</u>	<u>28.1</u>	249	28.1	248	28.3	249	28.2	<u>248</u>	<u>28.3</u>	246	28.5
483.xalancbmk	119	57.8	119	57.8	<u>119</u>	<u>57.8</u>	119	57.8	119	57.8	<u>119</u>	<u>57.8</u>

Results appear in the order in which they were run. Bold underlined text indicates a median measurement.

Submit Notes

The config file option 'submit' was used.

Operating System Notes

Stack size set to unlimited using "ulimit -s unlimited"

Platform Notes

BIOS configuration:

Set Power Efficiency Mode to Custom

Set Snoop Mode to ES mode

Set Patrol Scrub to Disable

Set Hyper-Threading to Disable

Sysinfo program /spec/config/sysinfo.rev6914

\$Rev: 6914 \$ \$Date:: 2014-06-25 #\$ e3fbb8667b5a285932ceab81e28219e1

running on localhost.localdomain Tue Sep 15 06:15:24 2015

This section contains SUT (System Under Test) info as seen by some common utilities. To remove or add to this section, see:

<http://www.spec.org/cpu2006/Docs/config.html#sysinfo>

From /proc/cpuinfo

model name : Intel(R) Xeon(R) CPU E5-2658A v3 @ 2.20GHz

2 "physical id"s (chips)

24 "processors"

cores, siblings (Caution: counting these is hw and system dependent. The following excerpts from /proc/cpuinfo might not be reliable. Use with

Continued on next page

Standard Performance Evaluation Corporation

info@spec.org

<http://www.spec.org/>

Page 2



SPEC CINT2006 Result

Copyright 2006-2015 Standard Performance Evaluation Corporation

Huawei

SPECint2006 = 56.7

Huawei CH226 V3 (Intel Xeon E5-2658A v3)

SPECint_base2006 = 54.4

CPU2006 license: 3175

Test sponsor: Huawei

Tested by: Huawei

Test date: Sep-2015

Hardware Availability: Feb-2015

Software Availability: Sep-2014

Platform Notes (Continued)

```

caution.)
  cpu cores : 12
  siblings  : 12
  physical 0: cores 0 1 2 3 4 5 8 9 10 11 12 13
  physical 1: cores 0 1 2 3 4 5 8 9 10 11 12 13
  cache size : 30720 KB

```

```

From /proc/meminfo
MemTotal:      263578440 kB
HugePages_Total:      0
Hugepagesize:    2048 kB

```

```

From /etc/*release* /etc/*version*
os-release:
NAME="Red Hat Enterprise Linux Server"
VERSION="7.0 (Maipo)"
ID="rhel"
ID_LIKE="fedora"
VERSION_ID="7.0"
PRETTY_NAME="Red Hat Enterprise Linux Server 7.0 (Maipo)"
ANSI_COLOR="0;31"
CPE_NAME="cpe:/o:redhat:enterprise_linux:7.0:GA:server"
redhat-release: Red Hat Enterprise Linux Server release 7.0 (Maipo)
system-release: Red Hat Enterprise Linux Server release 7.0 (Maipo)
system-release-cpe: cpe:/o:redhat:enterprise_linux:7.0:ga:server

```

```

uname -a:
Linux localhost.localdomain 3.10.0-123.el7.x86_64 #1 SMP Mon May 5 11:16:57
EDT 2014 x86_64 x86_64 x86_64 GNU/Linux

```

run-level 3 Sep 15 05:39

```

SPEC is set to: /spec
Filesystem      Type      Size      Used Avail Use% Mounted on
/dev/sdcl        ext4      443G      51G   370G  12% /

```

Additional information from dmidecode:

Warning: Use caution when you interpret this section. The 'dmidecode' program reads system data which is "intended to allow hardware to be accurately determined", but the intent may not be met, as there are frequent changes to hardware, firmware, and the "DMTF SMBIOS" standard.

BIOS Insyde Corp. 1.39 05/06/2015

Memory:

```

8x NO DIMM NO DIMM 3 rank
8x Samsung M393A2G40DB0-CPB 16 GB 1 rank 2133 MHz
8x Samsung M393A2G40DB0-CPB 16 GB 2 rank 2133 MHz

```

(End of data from sysinfo program)



SPEC CINT2006 Result

Copyright 2006-2015 Standard Performance Evaluation Corporation

Huawei

SPECint2006 = 56.7

Huawei CH226 V3 (Intel Xeon E5-2658A v3)

SPECint_base2006 = 54.4

CPU2006 license: 3175

Test sponsor: Huawei

Tested by: Huawei

Test date: Sep-2015

Hardware Availability: Feb-2015

Software Availability: Sep-2014

General Notes

Environment variables set by runspec before the start of the run:

```
KMP_AFFINITY = "granularity=fine,compact,1,0"
LD_LIBRARY_PATH = "/spec/libs/32:/spec/libs/64:/spec/sh"
OMP_NUM_THREADS = "24"
```

Binaries compiled on a system with 1x Core i5-4670K CPU + 16GB memory using RedHat EL 7.0

Transparent Huge Pages enabled with:

```
echo always > /sys/kernel/mm/transparent_hugepage/enabled
```

runspec command invoked through numactl i.e.:

```
numactl --interleave=all runspec <etc>
```

Base Compiler Invocation

C benchmarks:

```
icc -m64
```

C++ benchmarks:

```
icpc -m64
```

Base Portability Flags

```
400.perlbench: -DSPEC_CPU_LP64 -DSPEC_CPU_LINUX_X64
401.bzip2: -DSPEC_CPU_LP64
403.gcc: -DSPEC_CPU_LP64
429.mcf: -DSPEC_CPU_LP64
445.gobmk: -DSPEC_CPU_LP64
456.hmmer: -DSPEC_CPU_LP64
458.sjeng: -DSPEC_CPU_LP64
462.libquantum: -DSPEC_CPU_LP64 -DSPEC_CPU_LINUX
464.h264ref: -DSPEC_CPU_LP64
471.omnetpp: -DSPEC_CPU_LP64
473.astar: -DSPEC_CPU_LP64
483.xalancbmk: -DSPEC_CPU_LP64 -DSPEC_CPU_LINUX
```

Base Optimization Flags

C benchmarks:

```
-xCORE-AVX2 -ipo -O3 -no-prec-div -parallel -opt-prefetch -auto-p32
```

C++ benchmarks:

```
-xCORE-AVX2 -ipo -O3 -no-prec-div -opt-prefetch -auto-p32
-Wl,-z,muldefs -L/sh -lsmartheap64
```



SPEC CINT2006 Result

Copyright 2006-2015 Standard Performance Evaluation Corporation

Huawei

SPECint2006 = 56.7

Huawei CH226 V3 (Intel Xeon E5-2658A v3)

SPECint_base2006 = 54.4

CPU2006 license: 3175
Test sponsor: Huawei
Tested by: Huawei

Test date: Sep-2015
Hardware Availability: Feb-2015
Software Availability: Sep-2014

Base Other Flags

C benchmarks:

403.gcc: -Dalloca=_alloca

Peak Compiler Invocation

C benchmarks (except as noted below):

icc -m64

400.perlbench: icc -m32 -L/opt/intel/composer_xe_2015/lib/ia32

445.gobmk: icc -m32 -L/opt/intel/composer_xe_2015/lib/ia32

C++ benchmarks (except as noted below):

icpc -m64

471.omnetpp: icpc -m32 -L/opt/intel/composer_xe_2015/lib/ia32

Peak Portability Flags

400.perlbench: -DSPEC_CPU_LINUX_IA32
401.bzip2: -DSPEC_CPU_LP64
403.gcc: -DSPEC_CPU_LP64
429.mcf: -DSPEC_CPU_LP64
456.hmmer: -DSPEC_CPU_LP64
458.sjeng: -DSPEC_CPU_LP64
462.libquantum: -DSPEC_CPU_LP64 -DSPEC_CPU_LINUX
464.h264ref: -DSPEC_CPU_LP64
473.astar: -DSPEC_CPU_LP64
483.xalancbmk: -DSPEC_CPU_LP64 -DSPEC_CPU_LINUX

Peak Optimization Flags

C benchmarks:

400.perlbench: -xCORE-AVX2(pass 2) -prof-gen(pass 1) -ipo(pass 2)
-O3(pass 2) -no-prec-div(pass 2) -prof-use(pass 2)
-opt-prefetch -ansi-alias

401.bzip2: -xCORE-AVX2(pass 2) -prof-gen(pass 1) -ipo(pass 2)
-O3(pass 2) -no-prec-div -prof-use(pass 2) -auto-ilp32
-opt-prefetch -ansi-alias

Continued on next page



SPEC CINT2006 Result

Copyright 2006-2015 Standard Performance Evaluation Corporation

Huawei

SPECint2006 = 56.7

Huawei CH226 V3 (Intel Xeon E5-2658A v3)

SPECint_base2006 = 54.4

CPU2006 license: 3175

Test date: Sep-2015

Test sponsor: Huawei

Hardware Availability: Feb-2015

Tested by: Huawei

Software Availability: Sep-2014

Peak Optimization Flags (Continued)

403.gcc: -xCORE-AVX2 -ipo -O3 -no-prec-div -inline-calloc
-opt-malloc-options=3 -auto-ilp32

429.mcf: basepeak = yes

445.gobmk: -xCORE-AVX2(pass 2) -prof-gen(pass 1) -prof-use(pass 2)
-ansi-alias

456.hmmer: basepeak = yes

458.sjeng: -xCORE-AVX2(pass 2) -prof-gen(pass 1) -ipo(pass 2)
-O3(pass 2) -no-prec-div(pass 2) -prof-use(pass 2)
-unroll4

462.libquantum: basepeak = yes

464.h264ref: basepeak = yes

C++ benchmarks:

471.omnetpp: -xCORE-AVX2(pass 2) -prof-gen(pass 1) -ipo(pass 2)
-O3(pass 2) -no-prec-div(pass 2) -prof-use(pass 2)
-opt-ra-region-strategy=block -ansi-alias
-Wl,-z,muldefs -L/sh -lsmartheap

473.astar: -xCORE-AVX2 -ipo -O3 -no-prec-div -opt-prefetch
-auto-p32 -Wl,-z,muldefs -L/sh -lsmartheap64

483.xalancbmk: basepeak = yes

Peak Other Flags

C benchmarks:

403.gcc: -Dalloca=_alloca

The flags files that were used to format this result can be browsed at

<http://www.spec.org/cpu2006/flags/Intel-ic15.0-official-linux64.html>

<http://www.spec.org/cpu2006/flags/Huawei-Platform-Settings-HASWELL-V1.4.html>

You can also download the XML flags sources by saving the following links:

<http://www.spec.org/cpu2006/flags/Intel-ic15.0-official-linux64.xml>

<http://www.spec.org/cpu2006/flags/Huawei-Platform-Settings-HASWELL-V1.4.xml>



SPEC CINT2006 Result

Copyright 2006-2015 Standard Performance Evaluation Corporation

Huawei

SPECint2006 = 56.7

Huawei CH226 V3 (Intel Xeon E5-2658A v3)

SPECint_base2006 = 54.4

CPU2006 license: 3175

Test sponsor: Huawei

Tested by: Huawei

Test date: Sep-2015

Hardware Availability: Feb-2015

Software Availability: Sep-2014

SPEC and SPECint are registered trademarks of the Standard Performance Evaluation Corporation. All other brand and product names appearing in this result are trademarks or registered trademarks of their respective holders.

For questions about this result, please contact the tester.
For other inquiries, please contact webmaster@spec.org.

Tested with SPEC CPU2006 v1.2.
Report generated on Tue Oct 6 13:12:21 2015 by SPEC CPU2006 PS/PDF formatter v6932.
Originally published on 6 October 2015.