



SPEC® CINT2006 Result

Copyright 2006-2017 Standard Performance Evaluation Corporation

Lenovo Global Technology

SPECint®_rate2006 = 2780

ThinkSystem SR630
(2.50 GHz, Intel Xeon Platinum 8180)

SPECint_rate_base2006 = 2670

CPU2006 license: 9017

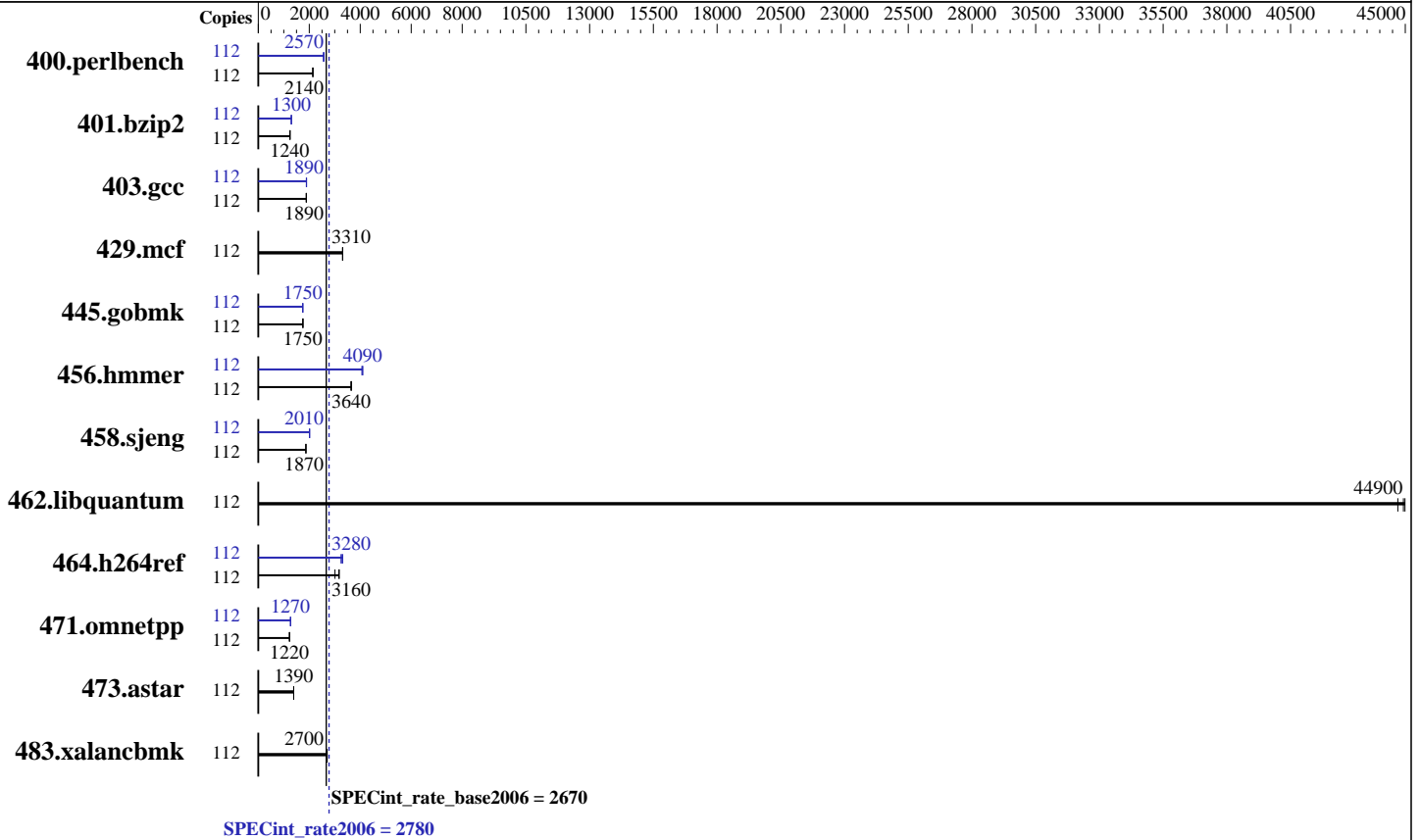
Test date: Jun-2017

Test sponsor: Lenovo Global Technology

Hardware Availability: Aug-2017

Tested by: Lenovo Global Technology

Software Availability: Apr-2017



Hardware

CPU Name: Intel Xeon Platinum 8180
 CPU Characteristics: Intel Turbo Boost Technology up to 3.80 GHz
 CPU MHz: 2500
 FPU: Integrated
 CPU(s) enabled: 56 cores, 2 chips, 28 cores/chip, 2 threads/core
 CPU(s) orderable: 1,2 chips
 Primary Cache: 32 KB I + 32 KB D on chip per core
 Secondary Cache: 1 MB I+D on chip per core
 L3 Cache: 38.5 MB I+D on chip per chip
 Other Cache: None
 Memory: 384 GB (24 x 16 GB 2Rx8 PC4-2666V-R)
 Disk Subsystem: 1 x 800 GB SAS, RAID 0
 Other Hardware: None

Software

Operating System: SUSE Linux Enterprise Server 12 SP2 (x86_64)
 Kernel 4.4.21-69-default
 Compiler: C/C++: Version 17.0.3.191 of Intel C/C++ Compiler for Linux
 Auto Parallel: Yes
 File System: btrfs
 System State: Run level 3 (multi-user)
 Base Pointers: 32-bit
 Peak Pointers: 32/64-bit
 Other Software: Microquill SmartHeap V10.2



SPEC CINT2006 Result

Copyright 2006-2017 Standard Performance Evaluation Corporation

Lenovo Global Technology

SPECint_rate2006 = 2780

ThinkSystem SR630
(2.50 GHz, Intel Xeon Platinum 8180)

SPECint_rate_base2006 = 2670

CPU2006 license: 9017

Test date: Jun-2017

Test sponsor: Lenovo Global Technology

Hardware Availability: Aug-2017

Tested by: Lenovo Global Technology

Software Availability: Apr-2017

Results Table

Benchmark	Base						Peak							
	Copies	Seconds	Ratio	Seconds	Ratio	Seconds	Ratio	Copies	Seconds	Ratio	Seconds	Ratio	Seconds	Ratio
400.perlbench	112	511	2140	511	2140	<u>511</u>	<u>2140</u>	112	426	2570	428	2560	<u>426</u>	<u>2570</u>
401.bzip2	112	<u>871</u>	<u>1240</u>	871	1240	866	1250	112	<u>832</u>	<u>1300</u>	831	1300	836	1290
403.gcc	112	480	1880	477	1890	<u>478</u>	<u>1890</u>	112	478	1890	<u>477</u>	<u>1890</u>	476	1900
429.mcf	112	<u>309</u>	<u>3310</u>	309	3310	309	3310	112	<u>309</u>	<u>3310</u>	309	3310	309	3310
445.gobmk	112	671	1750	<u>671</u>	<u>1750</u>	672	1750	112	673	1750	674	1740	<u>673</u>	<u>1750</u>
456.hammer	112	287	3640	<u>287</u>	<u>3640</u>	285	3660	112	257	4060	255	4100	<u>255</u>	<u>4090</u>
458.sjeng	112	726	1870	725	1870	<u>725</u>	<u>1870</u>	112	674	2010	<u>674</u>	<u>2010</u>	673	2010
462.libquantum	112	<u>51.7</u>	<u>44900</u>	51.9	44700	51.6	45000	112	<u>51.7</u>	<u>44900</u>	51.9	44700	51.6	45000
464.h264ref	112	<u>784</u>	<u>3160</u>	780	3180	824	3010	112	<u>755</u>	<u>3280</u>	748	3310	764	3240
471.omnetpp	112	<u>571</u>	<u>1220</u>	571	1230	571	1220	112	553	1260	<u>553</u>	<u>1270</u>	553	1270
473.astar	112	566	1390	566	1390	<u>566</u>	<u>1390</u>	112	566	1390	566	1390	<u>566</u>	<u>1390</u>
483.xalancbmk	112	286	2700	<u>286</u>	<u>2700</u>	287	2690	112	286	2700	<u>286</u>	<u>2700</u>	287	2690

Results appear in the order in which they were run. Bold underlined text indicates a median measurement.

Submit Notes

The numactl mechanism was used to bind copies to processors. The config file option 'submit' was used to generate numactl commands to bind each copy to a specific processor. For details, please see the config file.

Operating System Notes

Stack size set to unlimited using "ulimit -s unlimited"

Platform Notes

BIOS configuration:

Choose Operating Mode set to Maximum Performance

SNC set to Enable

DCU Streamer Prefetcher set to Disable

Stale AtoS set to Enable

LLC dead line alloc set to Disable

Sysinfo program /home/cpu2006-1.2-ic17.0u3/config/sysinfo.rev6993

Revision 6993 of 2015-11-06 (b5e8d4b4eb51ed28d7f98696cbe290c1)

running on Cable-8180-SUSE12SP2 Mon Jun 19 17:03:45 2017

This section contains SUT (System Under Test) info as seen by some common utilities. To remove or add to this section, see:

<http://www.spec.org/cpu2006/Docs/config.html#sysinfo>

From /proc/cpuinfo

model name : Intel(R) Xeon(R) Platinum 8180 CPU @ 2.50GHz

2 "physical id"s (chips)

Continued on next page

Standard Performance Evaluation Corporation

info@spec.org

<http://www.spec.org/>



SPEC CINT2006 Result

Copyright 2006-2017 Standard Performance Evaluation Corporation

Lenovo Global Technology

SPECint_rate2006 = 2780

ThinkSystem SR630
(2.50 GHz, Intel Xeon Platinum 8180)

SPECint_rate_base2006 = 2670

CPU2006 license: 9017

Test date: Jun-2017

Test sponsor: Lenovo Global Technology

Hardware Availability: Aug-2017

Tested by: Lenovo Global Technology

Software Availability: Apr-2017

Platform Notes (Continued)

```

112 "processors"
cores, siblings (Caution: counting these is hw and system dependent. The
following excerpts from /proc/cpuinfo might not be reliable. Use with
caution.)
cpu cores : 28
siblings  : 56
physical 0: cores 0 1 2 3 4 5 6 8 9 10 11 12 13 14 16 17 18 19 20 21 22 24
25 26 27 28 29 30
physical 1: cores 0 1 2 3 4 5 6 8 9 10 11 12 13 14 16 17 18 19 20 21 22 24
25 26 27 28 29 30
cache size : 39424 KB

```

```

From /proc/meminfo
MemTotal:      395881212 kB
HugePages_Total:    0
Hugepagesize:    2048 kB

```

```

From /etc/*release* /etc/*version*
SuSE-release:
SUSE Linux Enterprise Server 12 (x86_64)
VERSION = 12
PATCHLEVEL = 2
# This file is deprecated and will be removed in a future service pack or
release.
# Please check /etc/os-release for details about this release.
os-release:
NAME="SLES"
VERSION="12-SP2"
VERSION_ID="12.2"
PRETTY_NAME="SUSE Linux Enterprise Server 12 SP2"
ID="sles"
ANSI_COLOR="0;32"
CPE_NAME="cpe:/o:suse:sles:12:sp2"

```

```

uname -a:
Linux Cable-8180-SUSE12SP2 4.4.21-69-default #1 SMP Tue Oct 25 10:58:20 UTC
2016 (9464f67) x86_64 x86_64 x86_64 GNU/Linux

```

run-level 3 Jun 19 17:01

```

SPEC is set to: /home/cpu2006-1.2-ic17.0u3
Filesystem      Type  Size  Used Avail Use% Mounted on
/dev/sda3       btrfs 743G  13G 729G   2% /home

```

Additional information from dmidecode:

Warning: Use caution when you interpret this section. The 'dmidecode' program reads system data which is "intended to allow hardware to be accurately determined", but the intent may not be met, as there are frequent changes to hardware, firmware, and the "DMTF SMBIOS" standard.

BIOS Lenovo -[IVE109N-1.00]- 06/15/2017

Memory:

Continued on next page



SPEC CINT2006 Result

Copyright 2006-2017 Standard Performance Evaluation Corporation

Lenovo Global Technology

SPECint_rate2006 = 2780

ThinkSystem SR630
(2.50 GHz, Intel Xeon Platinum 8180)

SPECint_rate_base2006 = 2670

CPU2006 license: 9017

Test date: Jun-2017

Test sponsor: Lenovo Global Technology

Hardware Availability: Aug-2017

Tested by: Lenovo Global Technology

Software Availability: Apr-2017

Platform Notes (Continued)

24x Samsung M393A2K43BB1-CTD 16 GB 2 rank 2666 MHz

(End of data from sysinfo program)

General Notes

Environment variables set by runspec before the start of the run:

LD_LIBRARY_PATH = "/home/cpu2006-1.2-ic17.0u3/lib/ia32:/home/cpu2006-1.2-ic17.0u3/lib/intel64:/home/cpu2006-1.2-ic17.0u3/sh10.2"

Binaries compiled on a system with 1x Intel Core i7-4790 CPU + 32GB RAM
memory using Redhat Enterprise Linux 7.2

Transparent Huge Pages enabled by default

Filesystem page cache cleared with:

shell invocation of 'sync; echo 3 > /proc/sys/vm/drop_caches' prior to run
runspec command invoked through numactl i.e.:

numactl --interleave=all runspec <etc>

Base Compiler Invocation

C benchmarks:

icc -m32 -L/opt/intel/compilers_and_libraries_2017/linux/lib/ia32

C++ benchmarks:

icpc -m32 -L/opt/intel/compilers_and_libraries_2017/linux/lib/ia32

Base Portability Flags

400.perlbench: -D_FILE_OFFSET_BITS=64 -DSPEC_CPU_LINUX_IA32

401.bzip2: -D_FILE_OFFSET_BITS=64

403.gcc: -D_FILE_OFFSET_BITS=64

429.mcf: -D_FILE_OFFSET_BITS=64

445.gobmk: -D_FILE_OFFSET_BITS=64

456.hmmmer: -D_FILE_OFFSET_BITS=64

458.sjeng: -D_FILE_OFFSET_BITS=64

462.libquantum: -D_FILE_OFFSET_BITS=64 -DSPEC_CPU_LINUX

464.h264ref: -D_FILE_OFFSET_BITS=64

471.omnetpp: -D_FILE_OFFSET_BITS=64

473.astar: -D_FILE_OFFSET_BITS=64

483.xalancbmk: -D_FILE_OFFSET_BITS=64 -DSPEC_CPU_LINUX

Base Optimization Flags

C benchmarks:

-xCORE-AVX512 -ipo -O3 -no-prec-div -qopt-prefetch

-qopt-mem-layout-trans=3

Continued on next page

Standard Performance Evaluation Corporation

info@spec.org

http://www.spec.org/



SPEC CINT2006 Result

Copyright 2006-2017 Standard Performance Evaluation Corporation

Lenovo Global Technology

SPECint_rate2006 = 2780

ThinkSystem SR630
(2.50 GHz, Intel Xeon Platinum 8180)

SPECint_rate_base2006 = 2670

CPU2006 license: 9017

Test date: Jun-2017

Test sponsor: Lenovo Global Technology

Hardware Availability: Aug-2017

Tested by: Lenovo Global Technology

Software Availability: Apr-2017

Base Optimization Flags (Continued)

C++ benchmarks:

-xCORE-AVX512 -ipo -O3 -no-prec-div -qopt-prefetch
-qopt-mem-layout-trans=3 -Wl,-z,muldefs -L/sh10.2 -lsmartheap

Base Other Flags

C benchmarks:

403.gcc: -Dalloca=_alloca

Peak Compiler Invocation

C benchmarks (except as noted below):

icc -m32 -L/opt/intel/compilers_and_libraries_2017/linux/lib/ia32

400.perlbench: icc -m64

401.bzip2: icc -m64

456.hmmer: icc -m64

458.sjeng: icc -m64

C++ benchmarks:

icpc -m32 -L/opt/intel/compilers_and_libraries_2017/linux/lib/ia32

Peak Portability Flags

400.perlbench: -DSPEC_CPU_LP64 -DSPEC_CPU_LINUX_X64

401.bzip2: -DSPEC_CPU_LP64

403.gcc: -D_FILE_OFFSET_BITS=64

429.mcf: -D_FILE_OFFSET_BITS=64

445.gobmk: -D_FILE_OFFSET_BITS=64

456.hmmer: -DSPEC_CPU_LP64

458.sjeng: -DSPEC_CPU_LP64

462.libquantum: -D_FILE_OFFSET_BITS=64 -DSPEC_CPU_LINUX

464.h264ref: -D_FILE_OFFSET_BITS=64

471.omnetpp: -D_FILE_OFFSET_BITS=64

473.astar: -D_FILE_OFFSET_BITS=64

483.xalancbmk: -D_FILE_OFFSET_BITS=64 -DSPEC_CPU_LINUX



SPEC CINT2006 Result

Copyright 2006-2017 Standard Performance Evaluation Corporation

Lenovo Global Technology

SPECint_rate2006 = 2780

ThinkSystem SR630
(2.50 GHz, Intel Xeon Platinum 8180)

SPECint_rate_base2006 = 2670

CPU2006 license: 9017

Test date: Jun-2017

Test sponsor: Lenovo Global Technology

Hardware Availability: Aug-2017

Tested by: Lenovo Global Technology

Software Availability: Apr-2017

Peak Optimization Flags

C benchmarks:

400.perlbench: -prof-gen(pass 1) -prof-use(pass 2) -xCORE-AVX512(pass 2)
-par-num-threads=1(pass 1) -ipo(pass 2) -O3(pass 2)
-no-prec-div(pass 2) -auto-ilp32 -qopt-mem-layout-trans=3

401.bzip2: -prof-gen(pass 1) -prof-use(pass 2) -xCORE-AVX512(pass 2)
-par-num-threads=1(pass 1) -ipo(pass 2) -O3(pass 2)
-no-prec-div(pass 2) -qopt-prefetch -auto-ilp32
-qopt-mem-layout-trans=3

403.gcc: -xCORE-AVX512 -ipo -O3 -no-prec-div
-qopt-mem-layout-trans=3

429.mcf: basepeak = yes

445.gobmk: -prof-gen(pass 1) -prof-use(pass 2) -xCORE-AVX512(pass 2)
-par-num-threads=1(pass 1) -ipo(pass 2) -O3(pass 2)
-no-prec-div(pass 2) -qopt-mem-layout-trans=3

456.hmmer: -xCORE-AVX512 -ipo -O3 -no-prec-div -unroll2 -auto-ilp32
-qopt-mem-layout-trans=3

458.sjeng: -prof-gen(pass 1) -prof-use(pass 2) -xCORE-AVX512(pass 2)
-par-num-threads=1(pass 1) -ipo(pass 2) -O3(pass 2)
-no-prec-div(pass 2) -unroll4 -auto-ilp32
-qopt-mem-layout-trans=3

462.libquantum: basepeak = yes

464.h264ref: -prof-gen(pass 1) -prof-use(pass 2) -xCORE-AVX512(pass 2)
-par-num-threads=1(pass 1) -ipo(pass 2) -O3(pass 2)
-no-prec-div(pass 2) -unroll2 -qopt-mem-layout-trans=3

C++ benchmarks:

471.omnetpp: -prof-gen(pass 1) -prof-use(pass 2) -xCORE-AVX512(pass 2)
-par-num-threads=1(pass 1) -ipo(pass 2) -O3(pass 2)
-no-prec-div(pass 2)
-qopt-ra-region-strategy=block
-qopt-mem-layout-trans=3 -Wl,-z,muldefs
-L/sh10.2 -lsmartheap

473.astar: basepeak = yes

483.xalancbmk: basepeak = yes



SPEC CINT2006 Result

Copyright 2006-2017 Standard Performance Evaluation Corporation

Lenovo Global Technology

SPECint_rate2006 = 2780

ThinkSystem SR630
(2.50 GHz, Intel Xeon Platinum 8180)

SPECint_rate_base2006 = 2670

CPU2006 license: 9017

Test date: Jun-2017

Test sponsor: Lenovo Global Technology

Hardware Availability: Aug-2017

Tested by: Lenovo Global Technology

Software Availability: Apr-2017

Peak Other Flags

C benchmarks:

403.gcc: -Dalloca=_alloca

The flags files that were used to format this result can be browsed at

<http://www.spec.org/cpu2006/flags/Intel-ic17.0-official-linux64-revF.html>
<http://www.spec.org/cpu2006/flags/Lenovo-Platform-Flags-V1.2-SKL-C.html>

You can also download the XML flags sources by saving the following links:

<http://www.spec.org/cpu2006/flags/Intel-ic17.0-official-linux64-revF.xml>
<http://www.spec.org/cpu2006/flags/Lenovo-Platform-Flags-V1.2-SKL-C.xml>

SPEC and SPECint are registered trademarks of the Standard Performance Evaluation Corporation. All other brand and product names appearing in this result are trademarks or registered trademarks of their respective holders.

For questions about this result, please contact the tester.
For other inquiries, please contact webmaster@spec.org.

Tested with SPEC CPU2006 v1.2.
Report generated on Thu Jul 13 12:51:01 2017 by SPEC CPU2006 PS/PDF formatter v6932.
Originally published on 13 July 2017.