



SPEC® CINT2006 Result

Copyright 2006-2017 Standard Performance Evaluation Corporation

Dell Inc.

PowerEdge R940
(Intel Xeon Platinum 8160, 2.10 GHz)

SPECint®2006 = **78.6**

SPECint_base2006 = **75.1**

CPU2006 license: 55

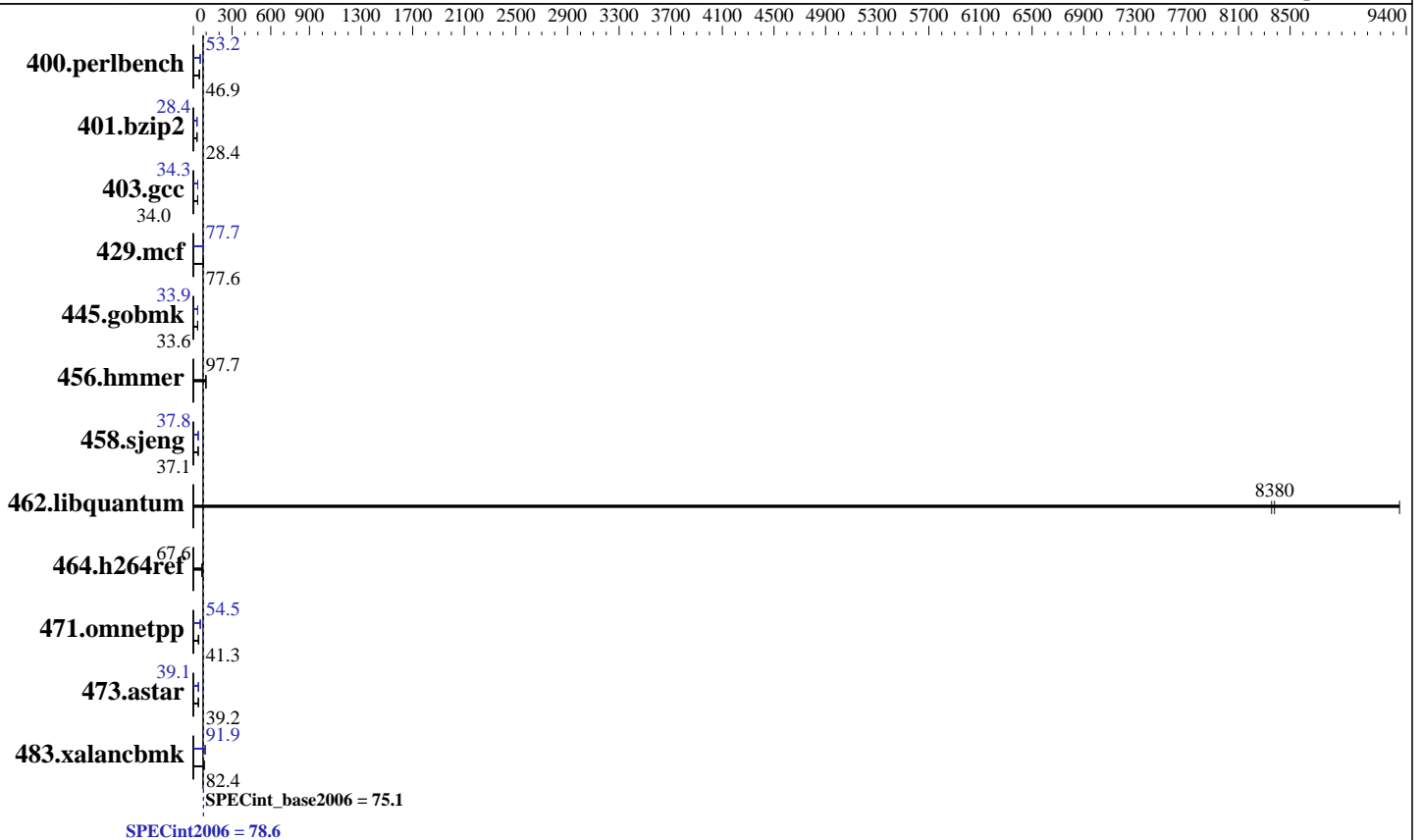
Test sponsor: Dell Inc.

Tested by: Dell Inc.

Test date: Oct-2017

Hardware Availability: Jul-2017

Software Availability: Apr-2017



Hardware

CPU Name: Intel Xeon Platinum 8160
 CPU Characteristics: Intel Turbo Boost Technology up to 3.70 GHz
 CPU MHz: 2100
 FPU: Integrated
 CPU(s) enabled: 96 cores, 4 chips, 24 cores/chip
 CPU(s) orderable: 2,4 chip
 Primary Cache: 32 KB I + 32 KB D on chip per core
 Secondary Cache: 1 MB I+D on chip per core
 L3 Cache: 33 MB I+D on chip per chip
 Other Cache: None
 Memory: 768 GB (48 x 16 GB 2Rx8 PC4-2666V-R)
 Disk Subsystem: 1 x 900 GB 15K RPM SAS12
 Other Hardware: None

Software

Operating System: SUSE Linux Enterprise Server 12 (x86_64) SP2
 4.4.21-69-default
 Compiler: C/C++: Version 17.0.3.191 of Intel C/C++
 Compiler for Linux
 Auto Parallel: Yes
 File System: xfs
 System State: Run level 3 (multi-user)
 Base Pointers: 32/64-bit
 Peak Pointers: 32/64-bit
 Other Software: Microquill SmartHeap V10.2



SPEC CINT2006 Result

Copyright 2006-2017 Standard Performance Evaluation Corporation

Dell Inc.

PowerEdge R940
(Intel Xeon Platinum 8160, 2.10 GHz)

SPECint2006 = 78.6

SPECint_base2006 = 75.1

CPU2006 license: 55
Test sponsor: Dell Inc.
Tested by: Dell Inc.

Test date: Oct-2017
Hardware Availability: Jul-2017
Software Availability: Apr-2017

Results Table

Benchmark	Base						Peak					
	Seconds	Ratio	Seconds	Ratio	Seconds	Ratio	Seconds	Ratio	Seconds	Ratio	Seconds	Ratio
400.perlbench	210	46.6	208	47.0	<u>208</u>	<u>46.9</u>	184	53.2	<u>184</u>	<u>53.2</u>	183	53.3
401.bzip2	340	28.4	<u>340</u>	<u>28.4</u>	341	28.3	<u>340</u>	<u>28.4</u>	340	28.4	341	28.3
403.gcc	236	34.0	<u>237</u>	<u>34.0</u>	238	33.8	234	34.4	239	33.7	<u>235</u>	<u>34.3</u>
429.mcf	116	78.8	118	77.2	<u>118</u>	<u>77.6</u>	118	77.1	<u>117</u>	<u>77.7</u>	117	78.1
445.gobmk	312	33.6	312	33.6	<u>312</u>	<u>33.6</u>	310	33.9	<u>310</u>	<u>33.9</u>	310	33.8
456.hammer	95.7	97.5	<u>95.4</u>	<u>97.7</u>	95.4	97.8	95.7	97.5	<u>95.4</u>	<u>97.7</u>	95.4	97.8
458.sjeng	<u>326</u>	<u>37.1</u>	326	37.1	325	37.2	<u>320</u>	<u>37.8</u>	320	37.8	320	37.8
462.libquantum	<u>2.47</u>	<u>8380</u>	2.48	8360	2.22	9350	<u>2.47</u>	<u>8380</u>	2.48	8360	2.22	9350
464.h264ref	<u>328</u>	<u>67.6</u>	331	66.9	327	67.7	<u>328</u>	<u>67.6</u>	331	66.9	327	67.7
471.omnetpp	147	42.5	165	37.9	<u>151</u>	<u>41.3</u>	114	54.9	<u>115</u>	<u>54.5</u>	119	52.6
473.astar	179	39.3	179	39.2	<u>179</u>	<u>39.2</u>	<u>180</u>	<u>39.1</u>	180	39.1	179	39.2
483.xalancbmk	83.8	82.3	<u>83.7</u>	<u>82.4</u>	81.1	85.0	76.3	90.4	<u>75.1</u>	<u>91.9</u>	74.7	92.4

Results appear in the order in which they were run. Bold underlined text indicates a median measurement.

Submit Notes

The config file option 'submit' was used.

Operating System Notes

Stack size set to unlimited using "ulimit -s unlimited"

Platform Notes

BIOS settings:
 Logical Processor Disabled
 Virtualization Technology Disabled
 Sub NUMA Cluster Disabled
 System Profile set to Custom
 CPU Performance set to Maximum Performance
 C1E Disabled
 C States set to Autonomous
 Uncore Frequency set to Dynamic
 Memory Patrol Scrub Disabled
 Energy Efficiency Policy set to Performance
 CPU Interconnect Bus Link Power Management Disabled
 PCI ASPM L1 Link Power Management Disabled
 Sysinfo program /home/cpu2006/config/sysinfo.rev6993
 Revision 6993 of 2015-11-06 (b5e8d4b4eb51ed28d7f98696cbe290c1)
 running on linux-ehog Fri Oct 13 08:59:59 2017

This section contains SUT (System Under Test) info as seen by some common utilities. To remove or add to this section, see:
Continued on next page



SPEC CINT2006 Result

Copyright 2006-2017 Standard Performance Evaluation Corporation

Dell Inc.

PowerEdge R940
(Intel Xeon Platinum 8160, 2.10 GHz)

SPECint2006 = 78.6

SPECint_base2006 = 75.1

CPU2006 license: 55
Test sponsor: Dell Inc.
Tested by: Dell Inc.

Test date: Oct-2017
Hardware Availability: Jul-2017
Software Availability: Apr-2017

Platform Notes (Continued)

<http://www.spec.org/cpu2006/Docs/config.html#sysinfo>

From /proc/cpuinfo

```

model name      : Intel(R) Xeon(R) Platinum 8160 CPU @ 2.10GHz
 4 "physical id"s (chips)
 96 "processors"
cores, siblings (Caution: counting these is hw and system dependent. The
following excerpts from /proc/cpuinfo might not be reliable. Use with
caution.)
  cpu cores     : 24
  siblings      : 24
  physical 0:   cores 0 1 2 3 4 5 8 9 10 11 12 13 16 17 18 19 20 21 24 25 26
                27 28 29
  physical 1:   cores 0 1 2 3 4 5 8 9 10 11 12 13 16 17 18 19 20 21 24 25 26
                27 28 29
  physical 2:   cores 0 1 2 3 4 5 8 9 10 11 12 13 16 17 18 19 20 21 24 25 26
                27 28 29
  physical 3:   cores 0 1 2 3 4 5 8 9 10 11 12 13 16 17 18 19 20 21 24 25 26
                27 28 29
 cache size     : 33792 KB

```

From /proc/meminfo

```

MemTotal:      791225344 kB
HugePages_Total: 0
Hugepagesize:   2048 kB

```

```

/usr/bin/lsb_release -d
SUSE Linux Enterprise Server 12 SP2

```

From /etc/*release* /etc/*version*

```

SuSE-release:
SUSE Linux Enterprise Server 12 (x86_64)
VERSION = 12
PATCHLEVEL = 2
# This file is deprecated and will be removed in a future service pack or
release.
# Please check /etc/os-release for details about this release.
os-release:
NAME="SLES"
VERSION="12-SP2"
VERSION_ID="12.2"
PRETTY_NAME="SUSE Linux Enterprise Server 12 SP2"
ID="sles"
ANSI_COLOR="0;32"
CPE_NAME="cpe:/o:suse:sles:12:sp2"

```

```

uname -a:
Linux linux-ehog 4.4.21-69-default #1 SMP Tue Oct 25 10:58:20 UTC 2016
(9464f67) x86_64 x86_64 x86_64 GNU/Linux

```

run-level 3 Oct 13 08:59

Continued on next page



SPEC CINT2006 Result

Copyright 2006-2017 Standard Performance Evaluation Corporation

Dell Inc.

SPECint2006 = 78.6

PowerEdge R940
(Intel Xeon Platinum 8160, 2.10 GHz)

SPECint_base2006 = 75.1

CPU2006 license: 55

Test date: Oct-2017

Test sponsor: Dell Inc.

Hardware Availability: Jul-2017

Tested by: Dell Inc.

Software Availability: Apr-2017

Platform Notes (Continued)

SPEC is set to: /home/cpu2006

Filesystem	Type	Size	Used	Avail	Use%	Mounted on
/dev/sda4	xfs	796G	17G	779G	3%	/home

Additional information from dmidecode:

Warning: Use caution when you interpret this section. The 'dmidecode' program reads system data which is "intended to allow hardware to be accurately determined", but the intent may not be met, as there are frequent changes to hardware, firmware, and the "DMTF SMBIOS" standard.

BIOS Dell Inc. 1.1.7 08/10/2017

Memory:

48x 00AD00B300AD HMA82GR7AFR8N-VK 16 GB 2 rank 2666 MHz

(End of data from sysinfo program)

General Notes

Environment variables set by runspec before the start of the run:

KMP_AFFINITY = "granularity=fine,compact"

LD_LIBRARY_PATH = "/home/cpu2006/lib/ia32:/home/cpu2006/lib/intel64:/home/cpu2006/sh10.2"

OMP_NUM_THREADS = "96"

Binaries compiled on a system with 1x Intel Core i7-4790 CPU + 32GB RAM memory using Redhat Enterprise Linux 7.2

Transparent Huge Pages enabled by default.

Filesystem page cache cleared with:

shell invocation of 'sync; echo 3 > /proc/sys/vm/drop_caches' prior to run

Base Compiler Invocation

C benchmarks:

icc -m64

C++ benchmarks:

icpc -m64

Base Portability Flags

400.perlbench: -DSPEC_CPU_LP64 -DSPEC_CPU_LINUX_X64

401.bzip2: -DSPEC_CPU_LP64

403.gcc: -DSPEC_CPU_LP64

429.mcf: -DSPEC_CPU_LP64

445.gobmk: -DSPEC_CPU_LP64

456.hmmer: -DSPEC_CPU_LP64

458.sjeng: -DSPEC_CPU_LP64

Continued on next page

Standard Performance Evaluation Corporation

info@spec.org

http://www.spec.org/

Page 4



SPEC CINT2006 Result

Copyright 2006-2017 Standard Performance Evaluation Corporation

Dell Inc.

PowerEdge R940
(Intel Xeon Platinum 8160, 2.10 GHz)

SPECint2006 = 78.6

SPECint_base2006 = 75.1

CPU2006 license: 55
Test sponsor: Dell Inc.
Tested by: Dell Inc.

Test date: Oct-2017
Hardware Availability: Jul-2017
Software Availability: Apr-2017

Base Portability Flags (Continued)

462.libquantum: -DSPEC_CPU_LP64 -DSPEC_CPU_LINUX
464.h264ref: -DSPEC_CPU_LP64
471.omnetpp: -DSPEC_CPU_LP64
473.astar: -DSPEC_CPU_LP64
483.xalancbmk: -DSPEC_CPU_LP64 -DSPEC_CPU_LINUX

Base Optimization Flags

C benchmarks:
-xCORE-AVX2 -ipo -O3 -no-prec-div -parallel -qopt-prefetch
-auto-p32

C++ benchmarks:
-xCORE-AVX2 -ipo -O3 -no-prec-div -qopt-prefetch -auto-p32
-Wl,-z,muldefs -L/sh10.2 -lsmartheap64

Base Other Flags

C benchmarks:
403.gcc: -Dalloca=_alloca

Peak Compiler Invocation

C benchmarks (except as noted below):
icc -m64

400.perlbench: icc -m32 -L/opt/intel/compilers_and_libraries_2017/linux/lib/ia32
445.gobmk: icc -m32 -L/opt/intel/compilers_and_libraries_2017/linux/lib/ia32

C++ benchmarks (except as noted below):
icc -m32 -L/opt/intel/compilers_and_libraries_2017/linux/lib/ia32

473.astar: icpc -m64

Peak Portability Flags

400.perlbench: -D_FILE_OFFSET_BITS=64 -DSPEC_CPU_LINUX_IA32
401.bzip2: -DSPEC_CPU_LP64
403.gcc: -DSPEC_CPU_LP64

Continued on next page



SPEC CINT2006 Result

Copyright 2006-2017 Standard Performance Evaluation Corporation

Dell Inc.

PowerEdge R940
(Intel Xeon Platinum 8160, 2.10 GHz)

SPECint2006 = 78.6

SPECint_base2006 = 75.1

CPU2006 license: 55

Test sponsor: Dell Inc.

Tested by: Dell Inc.

Test date: Oct-2017

Hardware Availability: Jul-2017

Software Availability: Apr-2017

Peak Portability Flags (Continued)

```

429.mcf: -DSPEC_CPU_LP64
445.gobmk: -D_FILE_OFFSET_BITS=64
456.hmmer: -DSPEC_CPU_LP64
458.sjeng: -DSPEC_CPU_LP64
462.libquantum: -DSPEC_CPU_LP64 -DSPEC_CPU_LINUX
464.h264ref: -DSPEC_CPU_LP64
471.omnetpp: -D_FILE_OFFSET_BITS=64
473.astar: -DSPEC_CPU_LP64
483.xalancbmk: -D_FILE_OFFSET_BITS=64 -DSPEC_CPU_LINUX

```

Peak Optimization Flags

C benchmarks:

```

400.perlbench: -prof-gen(pass 1) -prof-use(pass 2) -xCORE-AVX2(pass 2)
               -par-num-threads=1(pass 1) -ipo(pass 2) -O3(pass 2)
               -no-prec-div(pass 2) -qopt-prefetch

401.bzip2: -prof-gen(pass 1) -prof-use(pass 2) -xCORE-AVX2(pass 2)
            -par-num-threads=1(pass 1) -ipo(pass 2) -O3(pass 2)
            -no-prec-div -auto-ilp32 -qopt-prefetch

403.gcc: -xCORE-AVX2 -ipo -O3 -no-prec-div -inline-calloc
          -qopt-malloc-options=3 -auto-ilp32

429.mcf: -xCORE-AVX2 -ipo -O3 -no-prec-div -parallel
          -qopt-prefetch -auto-p32

445.gobmk: -prof-gen(pass 1) -prof-use(pass 2) -xCORE-AVX2(pass 2)
            -par-num-threads=1(pass 1) -ipo(pass 2) -O3(pass 2)
            -no-prec-div(pass 2)

456.hmmer: basepeak = yes

458.sjeng: -prof-gen(pass 1) -prof-use(pass 2) -xCORE-AVX2(pass 2)
            -par-num-threads=1(pass 1) -ipo(pass 2) -O3(pass 2)
            -no-prec-div(pass 2) -unroll4

462.libquantum: basepeak = yes

464.h264ref: basepeak = yes

```

C++ benchmarks:

```

471.omnetpp: -prof-gen(pass 1) -prof-use(pass 2) -xCORE-AVX2(pass 2)
              -par-num-threads=1(pass 1) -ipo(pass 2) -O3(pass 2)
              -no-prec-div(pass 2) -qopt-ra-region-strategy=block
              -Wl,-z,muldefs -L/sh10.2 -lsmartheap

```

Continued on next page



SPEC CINT2006 Result

Copyright 2006-2017 Standard Performance Evaluation Corporation

Dell Inc.

PowerEdge R940
(Intel Xeon Platinum 8160, 2.10 GHz)

SPECint2006 = 78.6

SPECint_base2006 = 75.1

CPU2006 license: 55

Test sponsor: Dell Inc.

Tested by: Dell Inc.

Test date: Oct-2017

Hardware Availability: Jul-2017

Software Availability: Apr-2017

Peak Optimization Flags (Continued)

473.astar: -xCORE-AVX2 -ipo -O3 -no-prec-div -qopt-prefetch
-auto-p32 -Wl,-z,muldefs -L/sh10.2 -lsmartheap64

483.xalancbmk: -xCORE-AVX2 -ipo -O3 -no-prec-div -qopt-prefetch
-Wl,-z,muldefs -L/sh10.2 -lsmartheap

Peak Other Flags

C benchmarks:

403.gcc: -Dalloca=_alloca

The flags files that were used to format this result can be browsed at

<http://www.spec.org/cpu2006/flags/Intel-ic17.0-official-linux64-revF.html>

<http://www.spec.org/cpu2006/flags/Dell-Platform-Flags-PowerEdge14G-revC.html>

You can also download the XML flags sources by saving the following links:

<http://www.spec.org/cpu2006/flags/Intel-ic17.0-official-linux64-revF.xml>

<http://www.spec.org/cpu2006/flags/Dell-Platform-Flags-PowerEdge14G-revC.xml>

SPEC and SPECint are registered trademarks of the Standard Performance Evaluation Corporation. All other brand and product names appearing in this result are trademarks or registered trademarks of their respective holders.

For questions about this result, please contact the tester.

For other inquiries, please contact webmaster@spec.org.

Tested with SPEC CPU2006 v1.2.

Report generated on Wed Nov 15 10:58:45 2017 by SPEC CPU2006 PS/PDF formatter v6932.

Originally published on 14 November 2017.

Standard Performance Evaluation Corporation

info@spec.org

<http://www.spec.org/>

Page 7