

# Standard Performance Evaluation Corporation

## Graphics and Workstation Performance Group

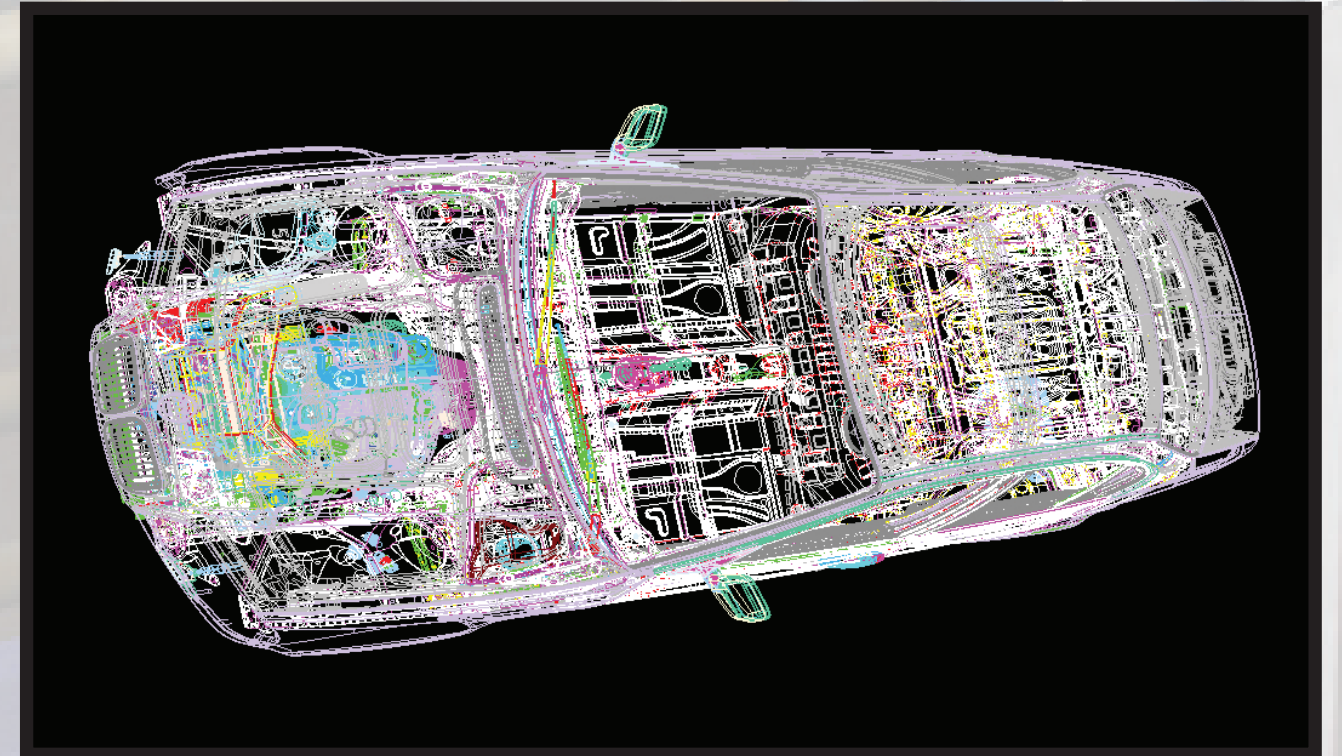
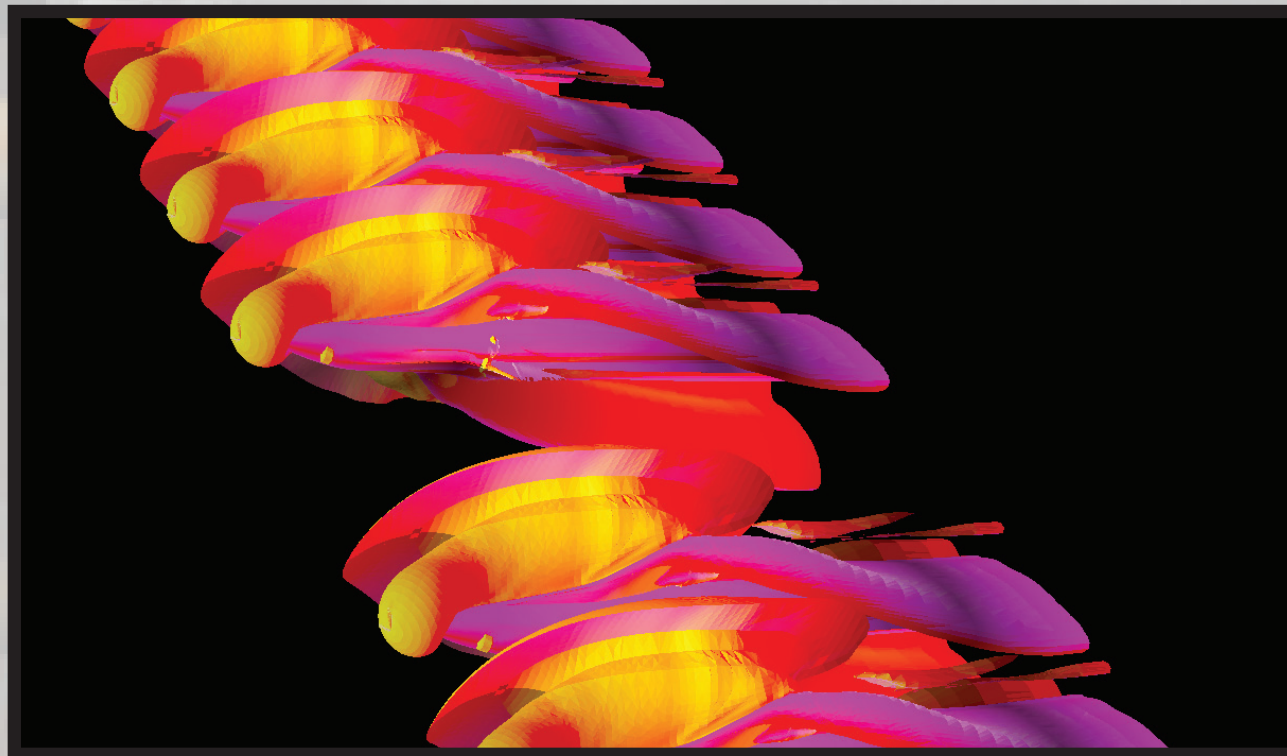
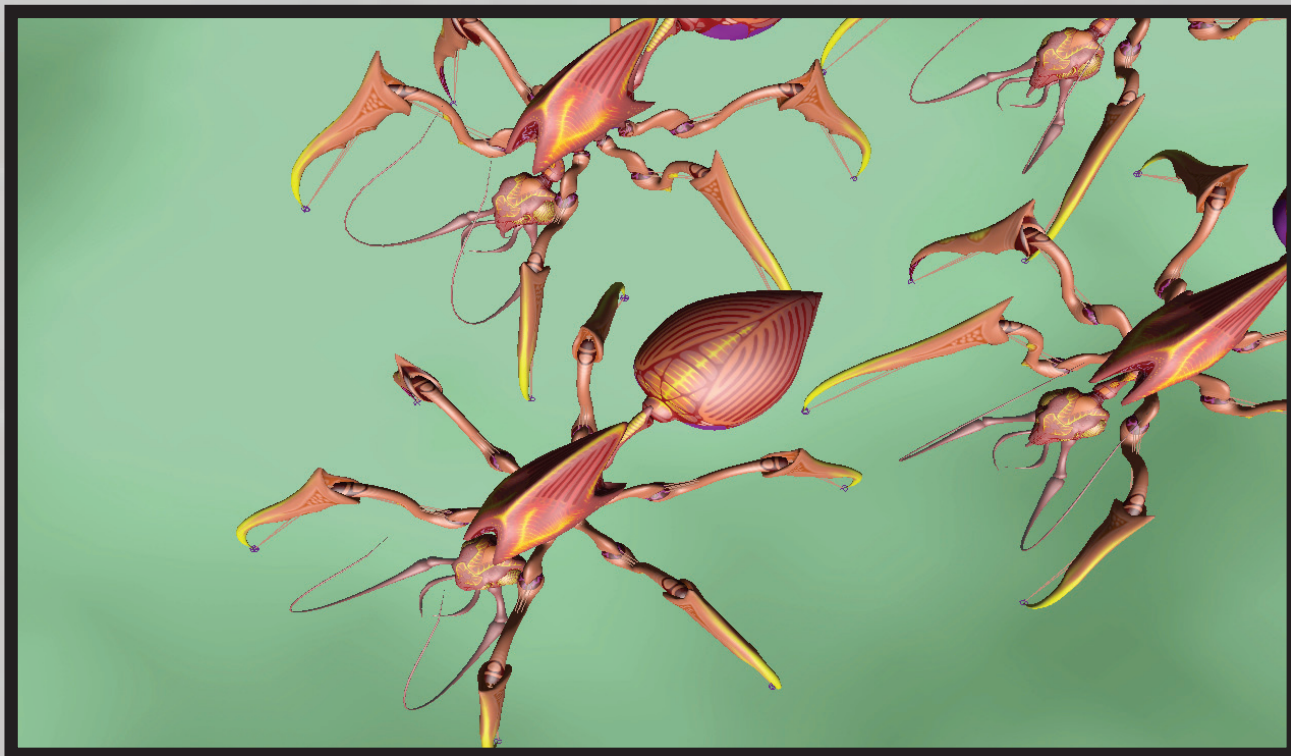
Umbrella organization for (currently) two project groups:

- SPECgpc - Graphics Performance Characterization
- SPECapc - Application Performance Characterization

[www.spec.org/gwpg](http://www.spec.org/gwpg)

SPECgpc benchmark:

- SPECviewperf 10 - application-based OpenGL performance

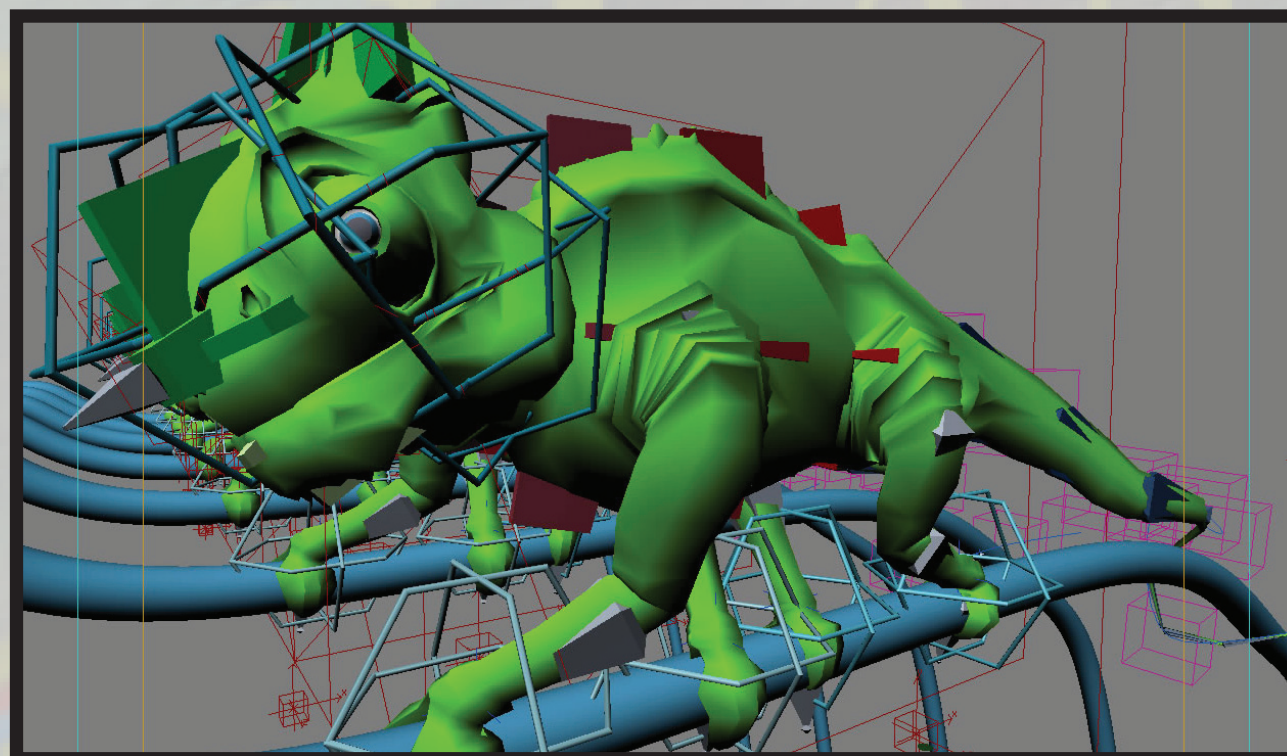


- SPECviewperf 11 is in the works

SPECapc benchmarks - characterize the host applications



NewTek LightWave 9.6



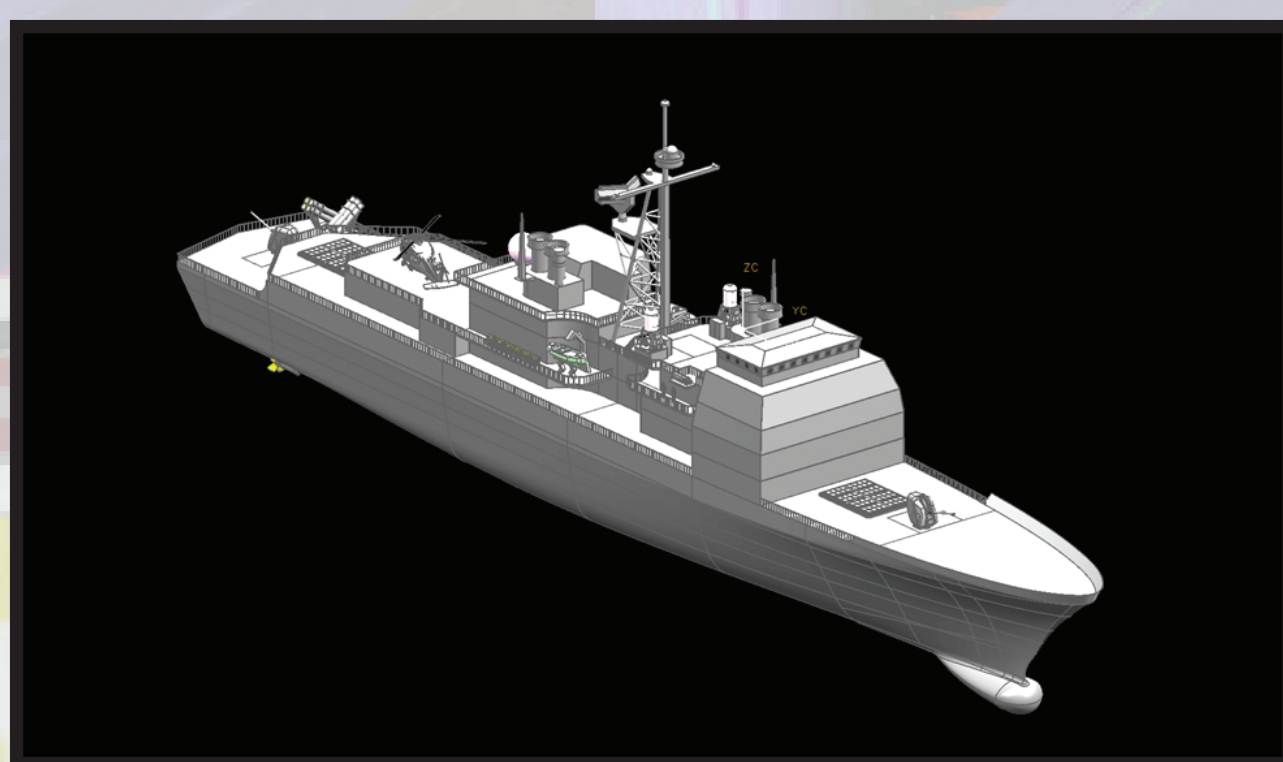
Autodesk 3ds max 9



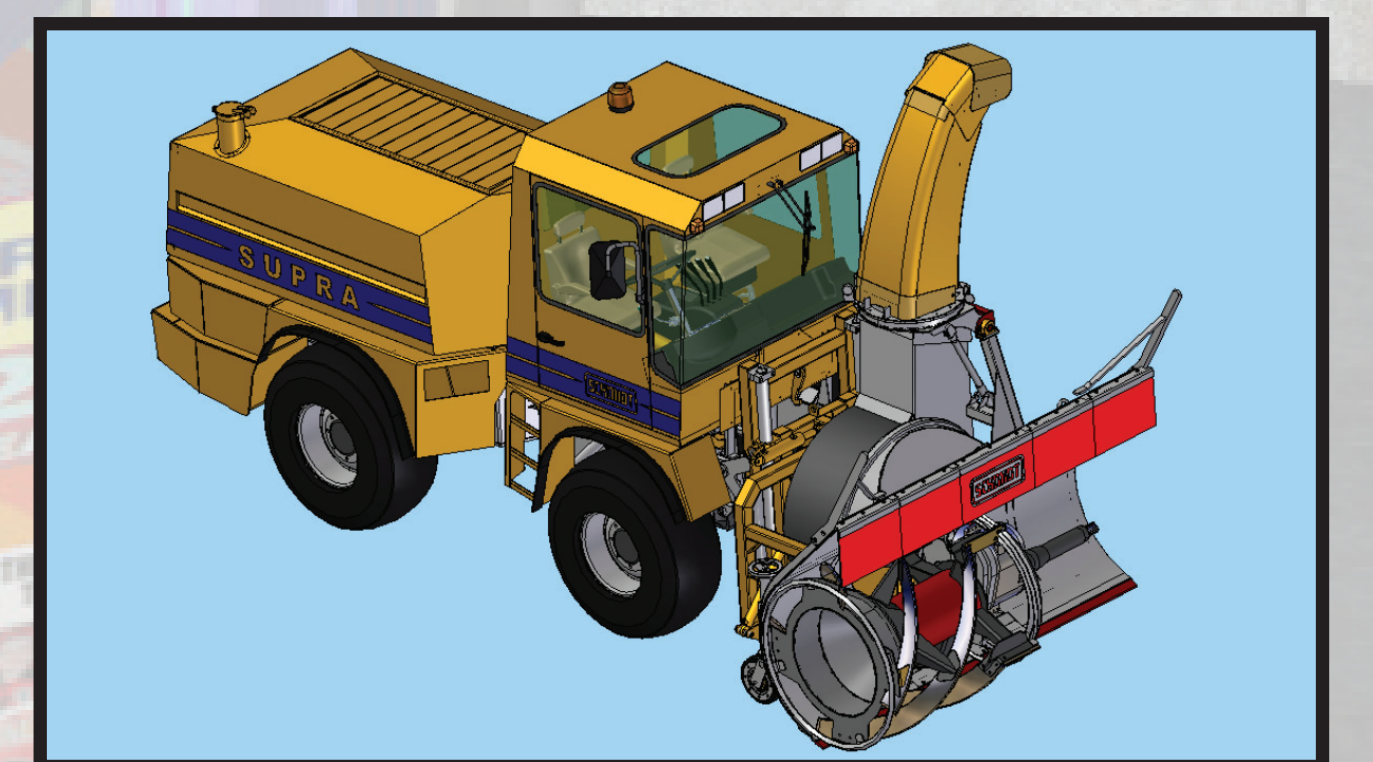
Autodesk Maya 2009



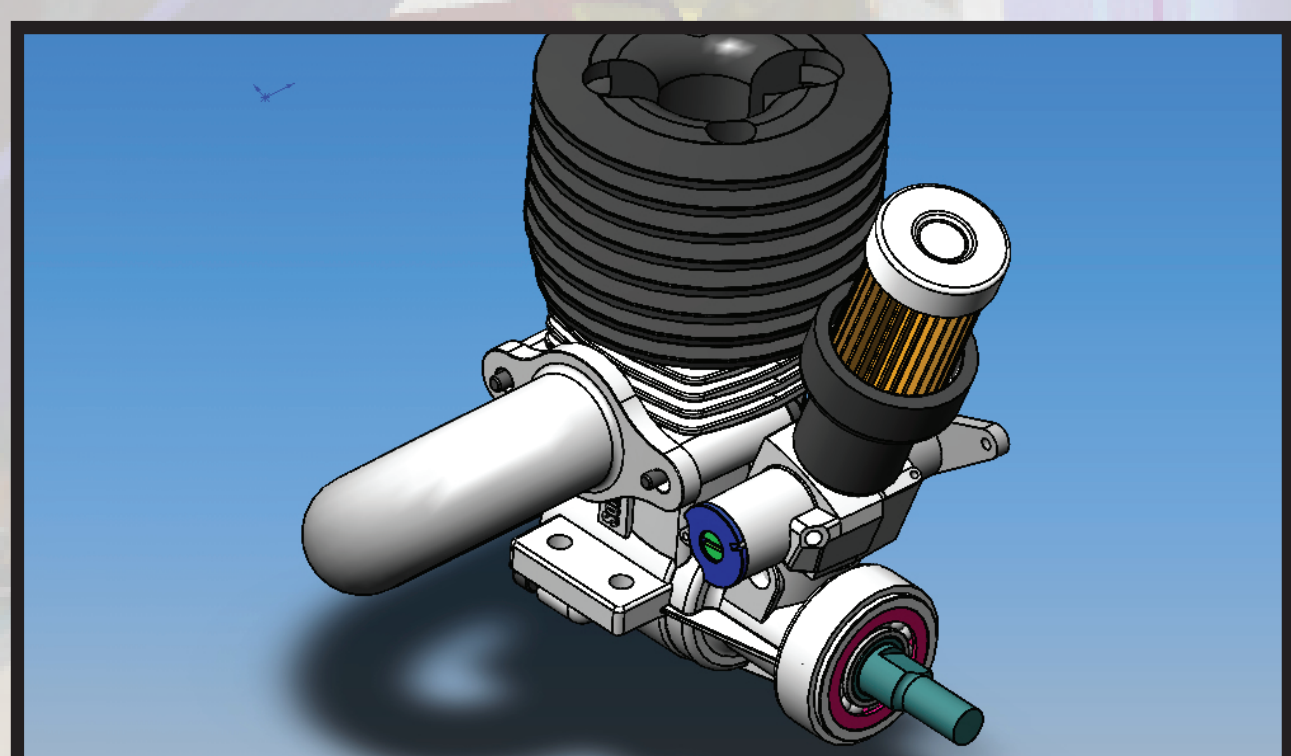
PTC ProENGINEER WF2



SIEMENS PLMS NX4



SIEMENS PLMS Solid Edge 19



Dassault SolidWorks 2007

Refreshes are in the works for:

- 3ds max
- ProENGINEER
- NX
- Solid Edge

Looking for...

- CPU scaling (including cores)
- Graphics scaling
- etc